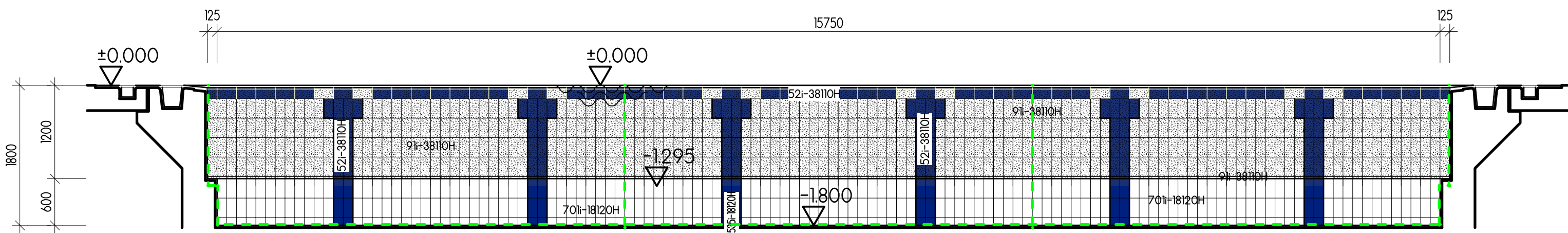
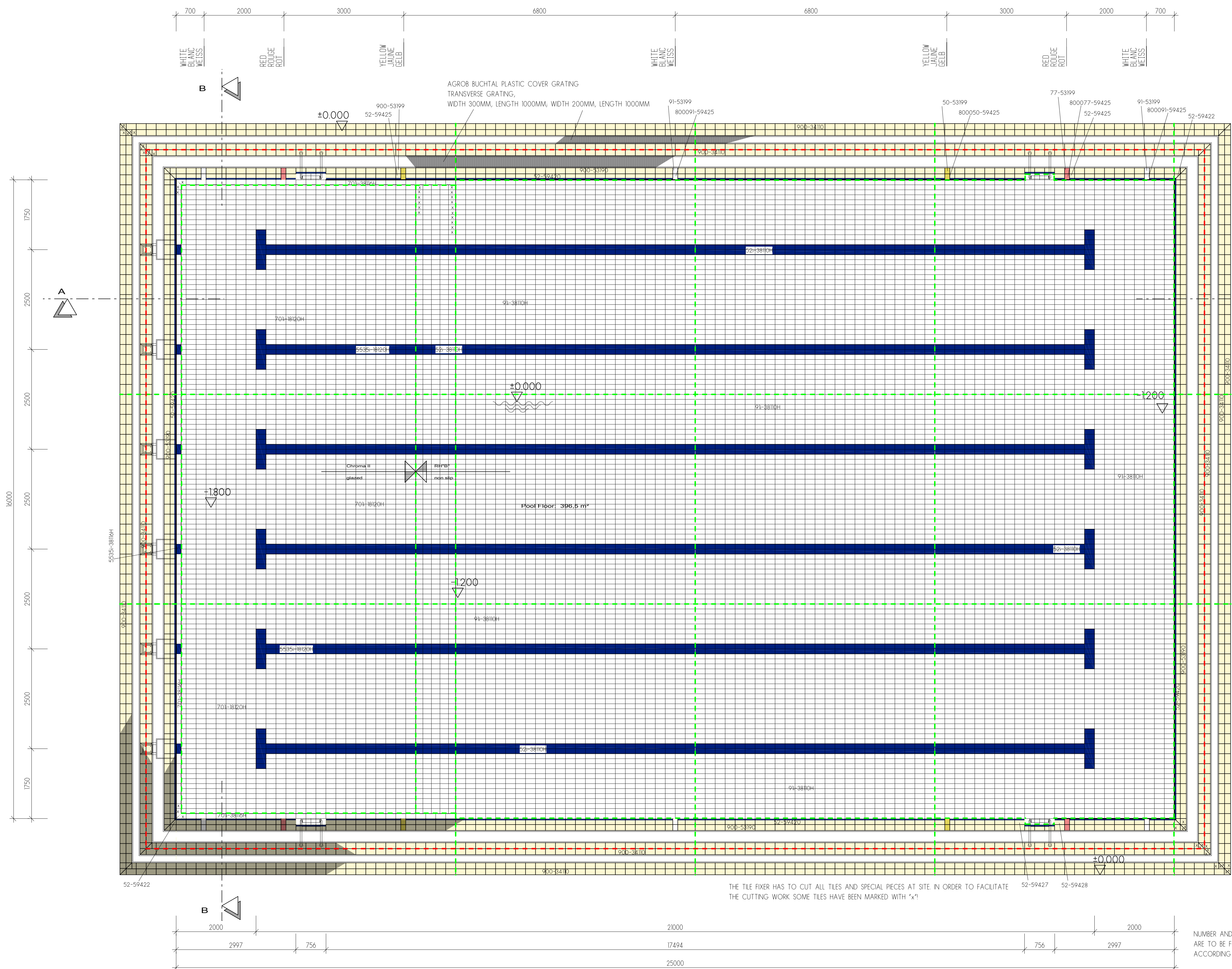


Section A - A S.: 1:50



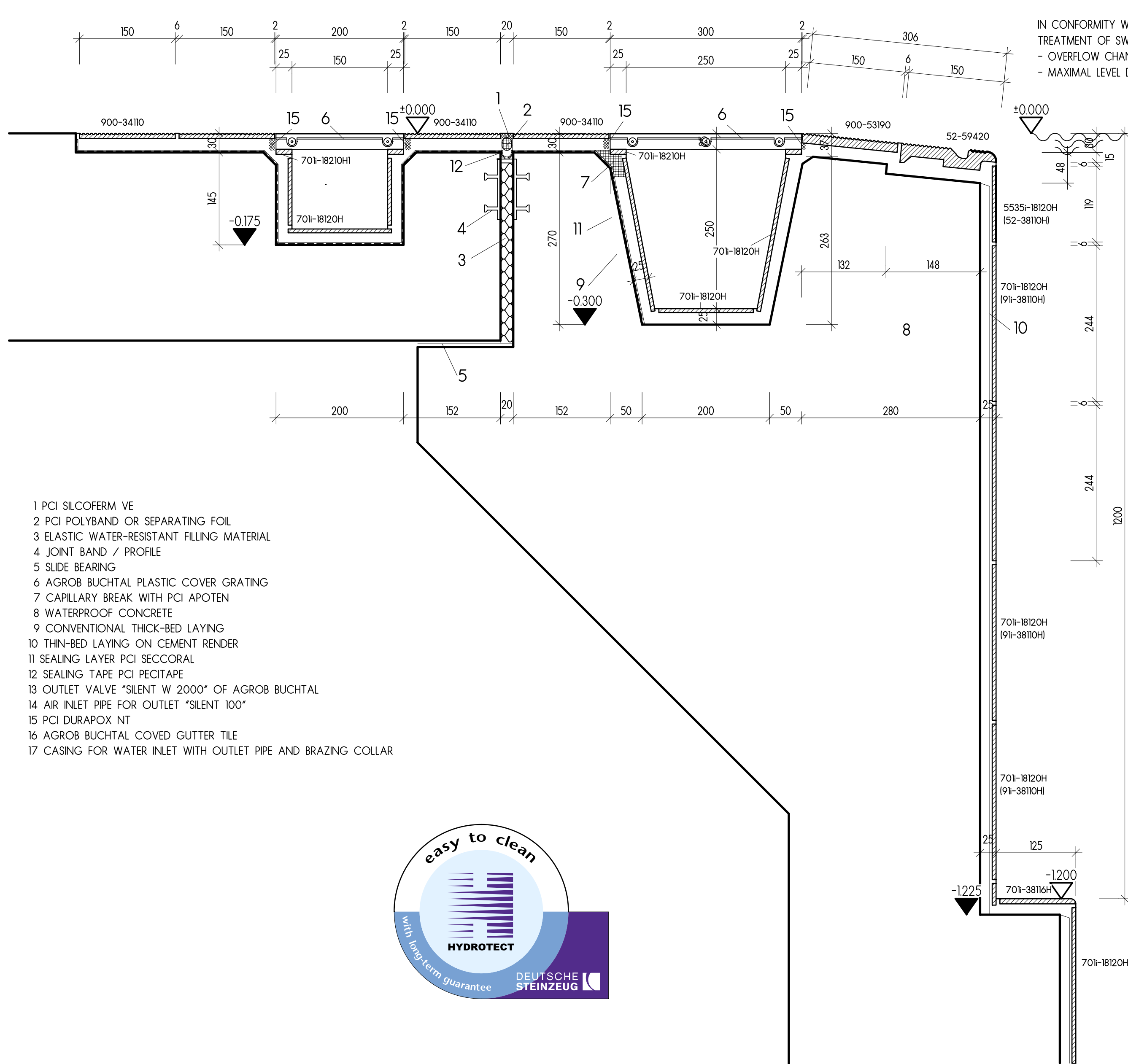
Section B - B S.: 1:50



Plan S.: 1:50

THE TILE FIXER HAS TO CUT ALL TILES AND SPECIAL PECES AT SITE IN ORDER TO FACILITATE THE CUTTING WORK SOME TILES HAVE BEEN MARKED WITH "X"

NUMBER AND POSITION OF CHANNEL OUTLETS ARE TO BE FIXED BY THE EXPERT PLANNER ACCORDING TO DIN 19643

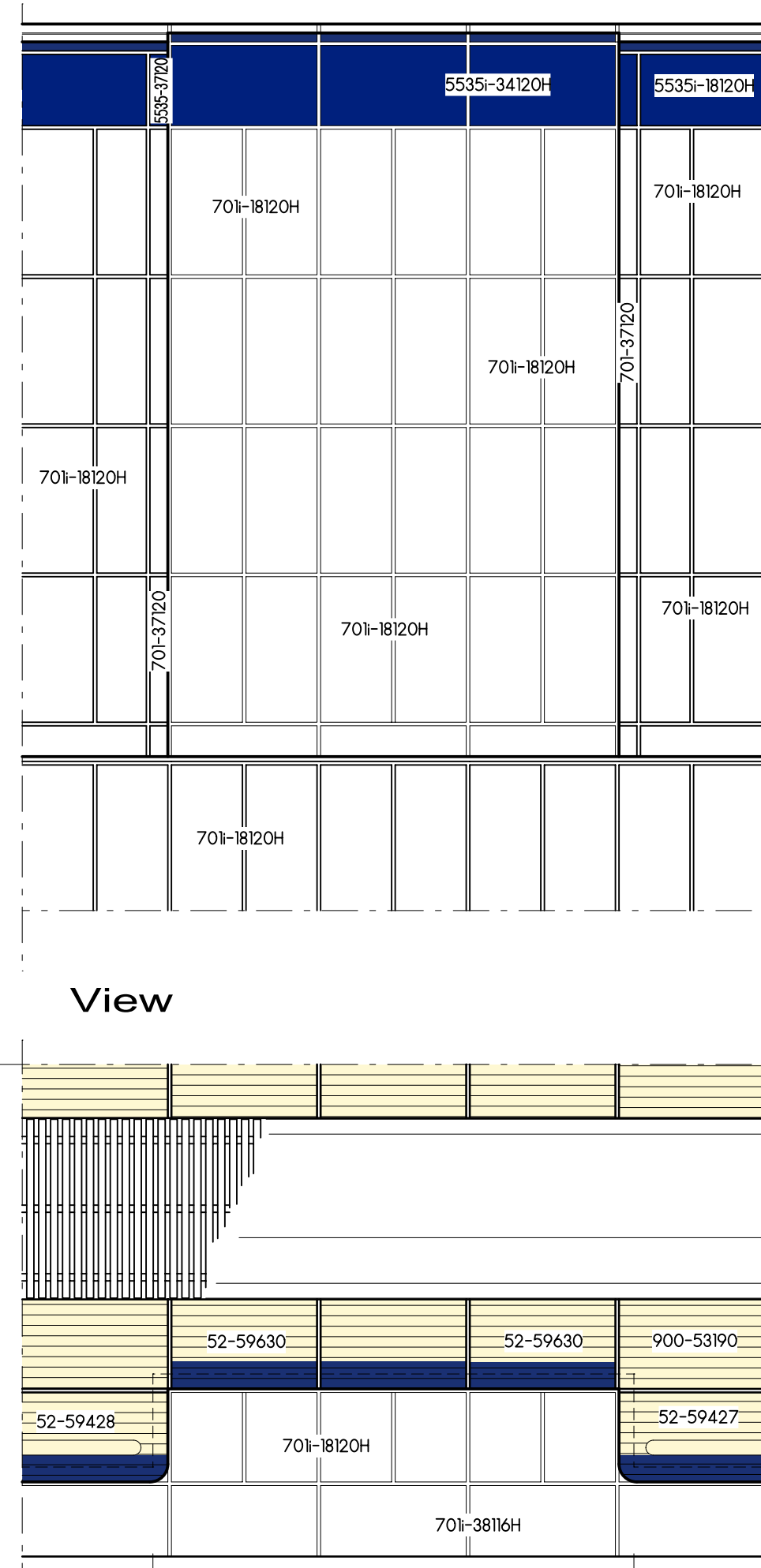


- 1 PCI SILCOFORM VE
- 2 PCI POLYBAND OR SEPARATING FOIL
- 3 ELASTIC WATER-RESISTANT FILLING MATERIAL
- 4 JOINT BAND / PROFILE
- 5 SLIDE BEARING
- 6 AGROB BUCHTAL PLASTIC COVER GRATING
- 7 CAPILLARY BREAK WITH PCI APOTEN
- 8 WATERPROOF CONCRETE
- 9 CONVENTIONAL THICK-BED LAYING
- 10 THIN-BED LAYING ON CEMENT RENDER
- 11 SEALING LAYER PCI SECCORAL
- 12 SEALING TAPE PCI PECITAPE
- 13 OUTLET VALVE "SILENT W 2000" OF AGROB BUCHTAL
- 14 AIR INLET PIPE FOR OUTLET "SILENT 100"
- 15 PCI DARAPAX NT
- 16 AGROB BUCHTAL COVERED GUTTER TILE
- 17 CASING FOR WATER INLET WITH OUTLET PIPE AND BRAZING COLLAR

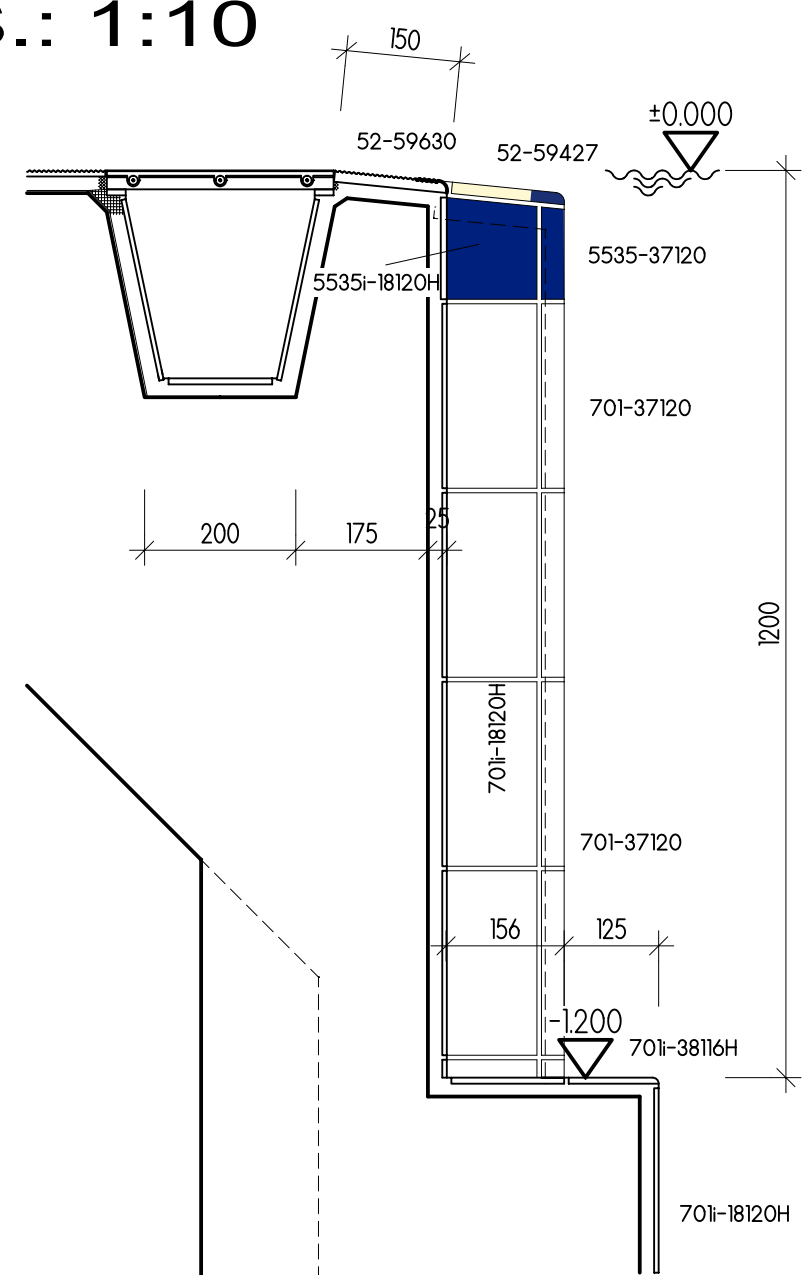


Detail of the Pool Edge S.: 1:5

Detail of Ladder Recess S.: 1:10



Top View



Section

D	Leiternische	
C	Leiternische entfernt	
B	Rinne im Beckenumgang	
A	Höhe Stehstufe und Rinne	
INDEX		Date:

Note of release:
This plan is just a recommendation and must only be used after release by the planner / architect commissioned by the building owner or approval by the direction of works authorised by the building owner!
Deutsche Steinzeug Keramik GmbH expressly excludes liability for all kinds of damages which may result from the plans!
Without corresponding release the documents are used on the own responsibility and at the sole risk of the executive of construction works.

This plan has been examined, found correct and released for execution:

Place, date Stamp and signature

Sportkomplex

--- static movement joints / joints in the structure
- - - additional movement joints in the ceramic covering
Movement joints are to be positioned according to static requirements and local conditions or in accordance with the instructions of the architect or responsible resident engineer. All movement joints, additional expansion joints in the covering etc., which are shown in drawings from the service for architects, shall be regarded as recommendations only.
Our suggested methods of sealing are given for guidance only.
Binding instructions must be given by the architect or supervision of construction.
We recommend to use epoxy resin for filling the joints in the whole pool head area, including channel in case of chemical stresses caused by salt-, sea or thermal water, the entire pool should be jointed with epoxy resin. It is absolutely necessary to follow the processing instructions given by the manufacturer / supplier.
The currently valid DIN rules as well as the regulations of the country in question have to be observed.
Number and position of channel outlets are to be fixed by the expert planner.
Our instructions concerning the cleaning of ceramic coverings have strictly to be observed.

Building Project: Swimming Pool 25,0 x 16,0 m
Plan, Sections + Details

Planning:

Drawing No: 150 / 110 / 115
Scale: 150 / 110 / 115
Head of team: 4 M. Grüner
Date: revised: design: Schart A.
revised: design: Kozal
revised: design: Schart A.
All recommendations regarding the application and the technical use of our own products or of products manufactured by third parties are given without any engagement.
The selection of materials and their technical use are incumbent on the purchaser or his customer (executives or construction works, planners / architects commissioned by the building owner and direction of works).
The technical regulations (eg. standards, codes of practice, product information etc.) have to be observed. We assume liability only for our products and refer to our General Terms of Sale and Delivery to which our liability conforms.
This drawing is protected by copyright.
It must not be duplicated or made accessible to third parties without our consent.

DEUTSCHE STEINZEUG AGROB BUCHTAL